



Northfield Mountain Pumped Storage
Project (No. 2485) and
Turners Falls Hydroelectric Project
(No. 1889)

Project Boundary
Map 1 of 9

Legend

 Project Boundary Polygon

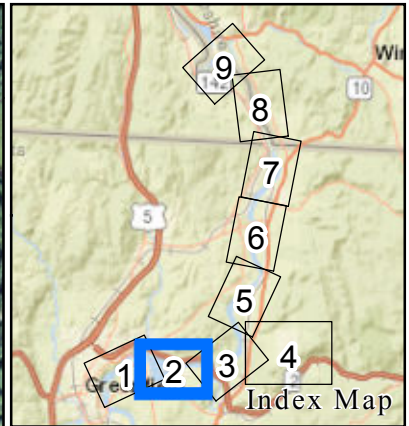
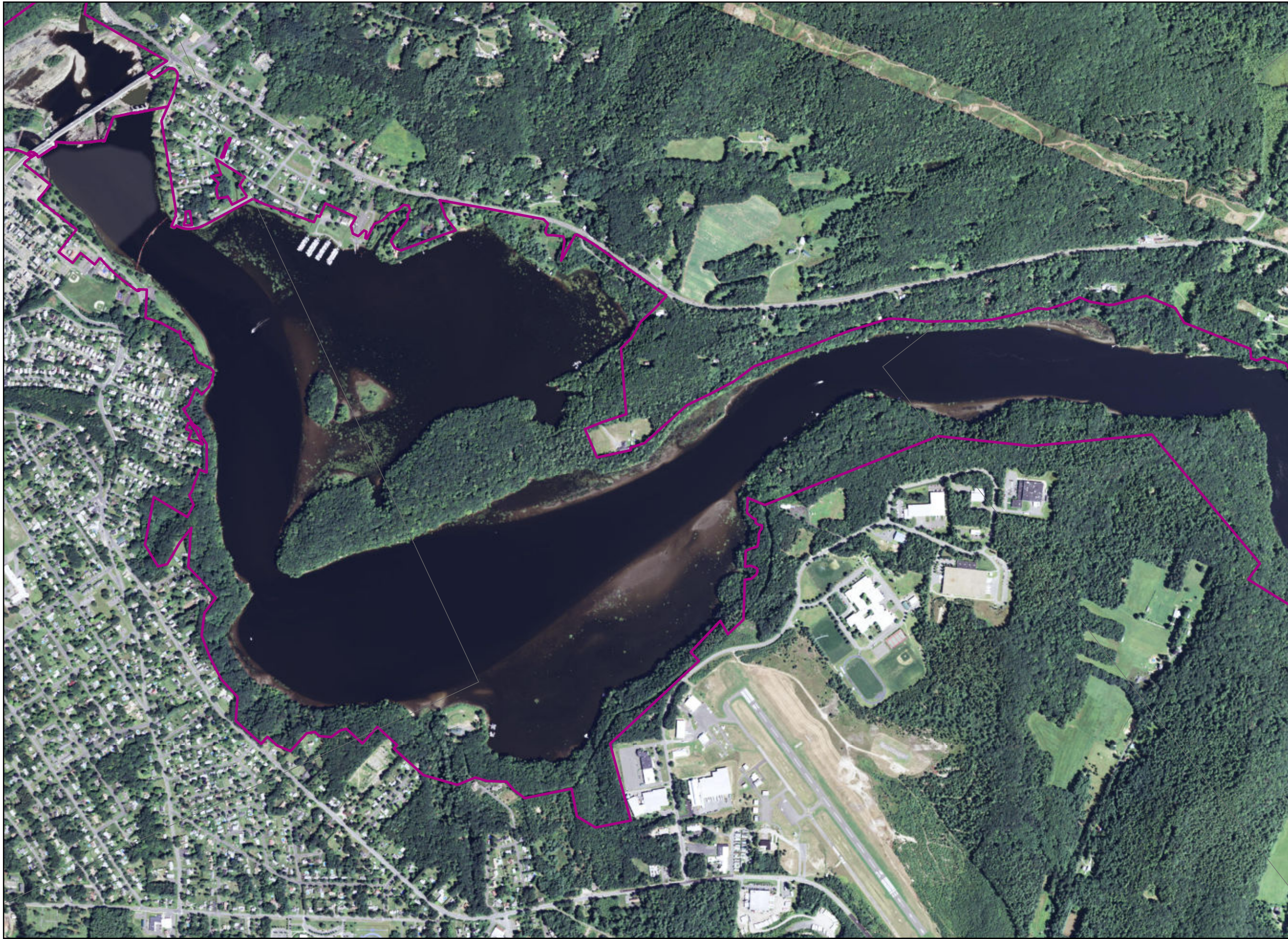


Service Layer Credits: Sources: Esri, HERE, DeLorme, USGS, Intermap, INCREMENT P, NRCan, Esri Japan, METI, Esri China (Hong Kong), Esri Korea, Esri (Thailand), MapmyIndia, NGCC, © OpenStreetMap contributors, and the GIS User Community
Source: Esri, DigitalGlobe, GeoEye, Earthstar Geographics, CNES/Airbus DS, USDA, USGS, AEX, Getmapping, Aerogrid, IGN, IGP, swisstopo, and the GIS User Community

0 250 500 1,000 Feet
1 inch = 1,000 feet




Copyright © 2016 FirstLight Power Resources All rights reserved.



Northfield Mountain Pumped Storage Project (No. 2485) and
Turners Falls Hydroelectric Project (No. 1889)

Project Boundary
Map 2 of 9

Legend

 Project Boundary Polygon

N

0 250 500 1,000 Feet

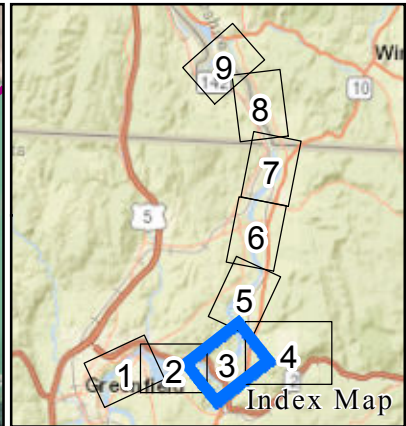
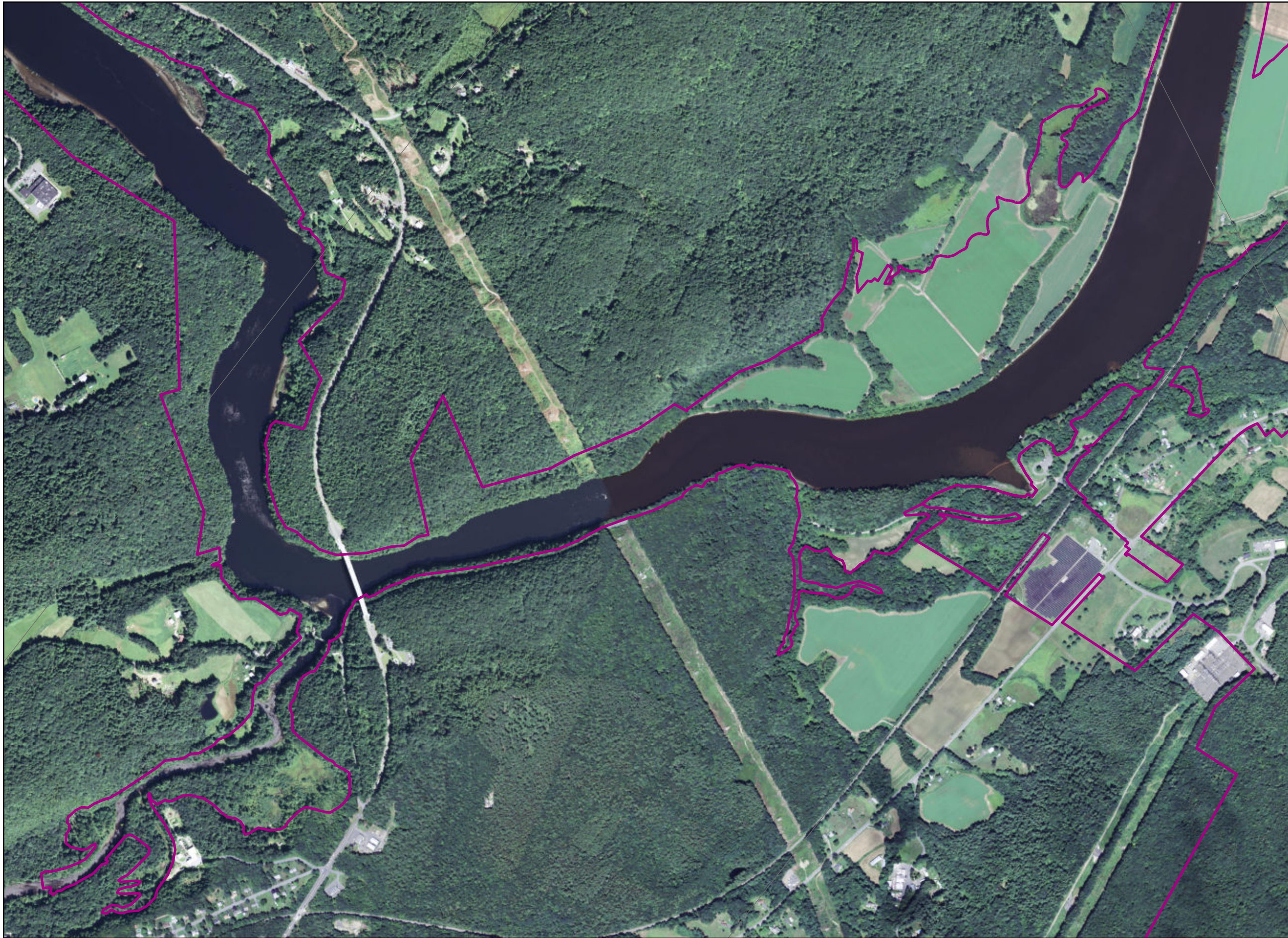
1 inch = 1,000 feet

Service Layer Credits: Sources: Esri, HERE, DeLorme, USGS, Intermap, INCREMENT P, NRCan, Esri Japan, METI, Esri China (Hong Kong), Esri Korea, Esri (Thailand), MapmyIndia, NGCC, © OpenStreetMap contributors, and the GIS User Community

Source: Esri, DigitalGlobe, GeoEye, Earthstar Geographics, CNES/Airbus DS, USDA, USGS, AEX, Getmapping, Aerogrid, IGN, IGP, swisstopo, and the GIS User Community




Copyright © 2016 FirstLight Power Resources All rights reserved.




Northfield Mountain Pumped Storage Project (No. 2485) and
Turners Falls Hydroelectric Project (No. 1889)

Project Boundary
Map 3 of 9

Legend

 Project Boundary Polygon

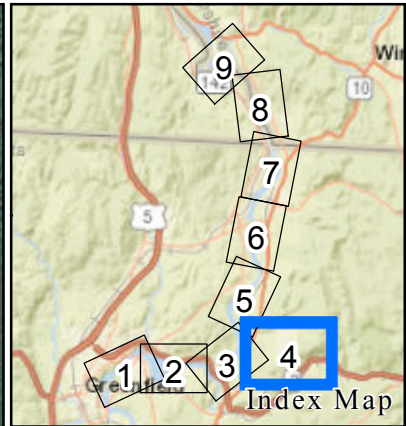


Service Layer Credits: Sources: Esri, HERE, DeLorme, USGS, Intermap, INCREMENT P, NRCan, Esri Japan, METI, Esri China (Hong Kong), Esri Korea, Esri (Thailand), MapmyIndia, NGCC, © OpenStreetMap contributors, and the GIS User Community
Source: Esri, DigitalGlobe, GeoEye, Earthstar Geographics, CNES/Airbus DS, USDA, USGS, AEX, Getmapping, Aerogrid, IGN, IGP, swisstopo, and the GIS User Community

0 250 500 1,000 Feet
1 inch = 1,000 feet




Copyright © 2016 FirstLight Power Resources All rights reserved.




Northfield Mountain Pumped Storage
Project (No. 2485) and
Turners Falls Hydroelectric Project
(No. 1889)

Project Boundary
Map 4 of 9

Legend

 Project Boundary Polygon

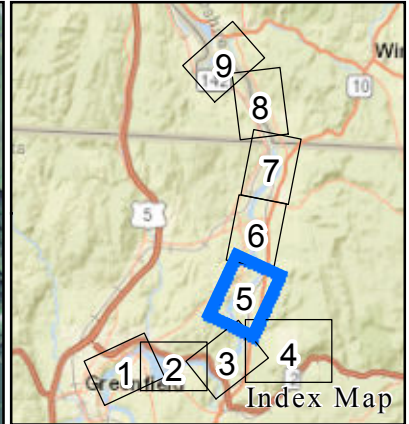
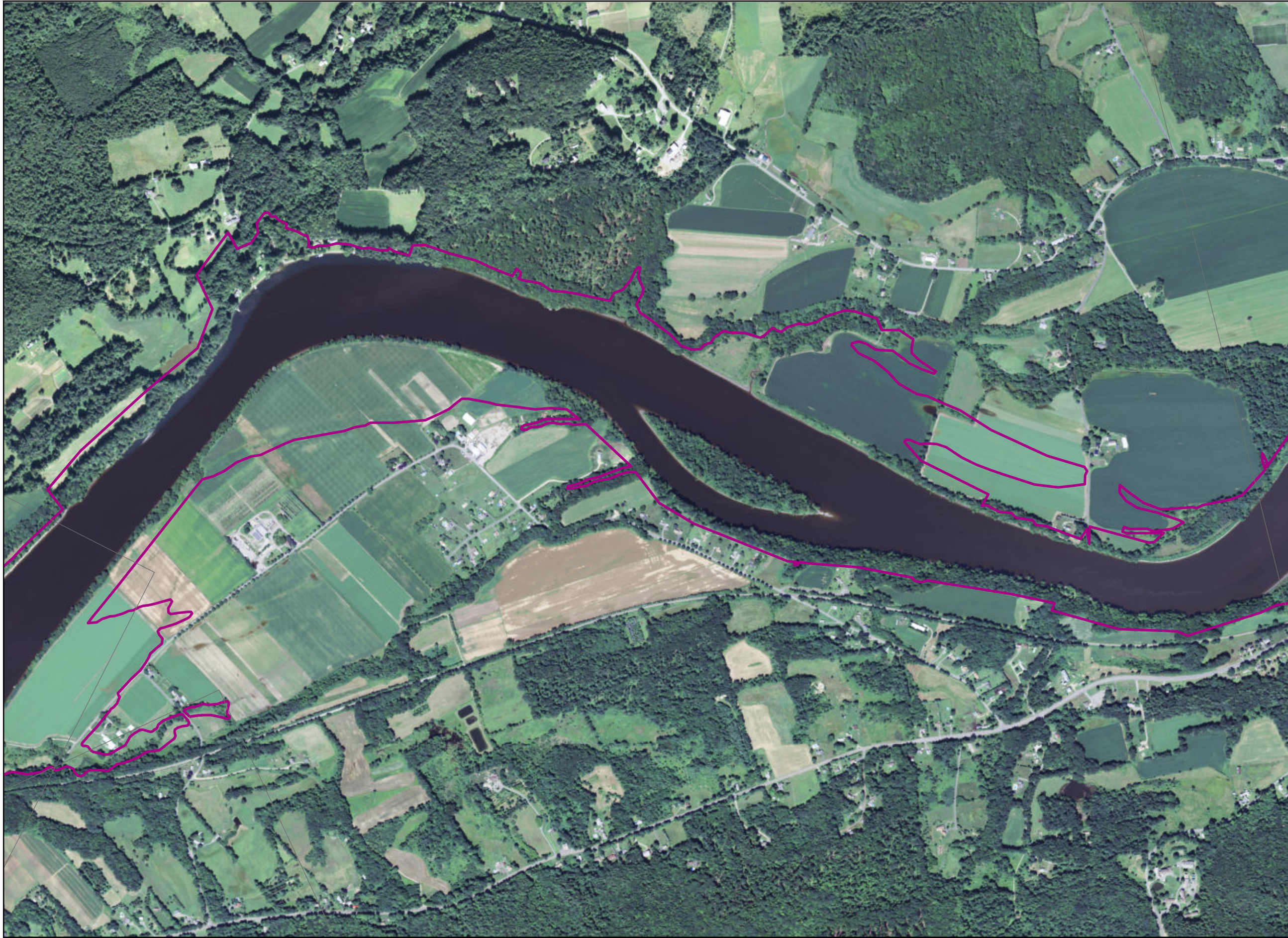


Service Layer Credits: Sources: Esri, HERE, DeLorme, USGS, Intermap, INCREMENT P, NRCan, Esri Japan, METI, Esri China (Hong Kong), Esri Korea, Esri (Thailand), MapmyIndia, NGCC, © OpenStreetMap contributors, and the GIS User Community
Source: Esri, DigitalGlobe, GeoEye, Earthstar Geographics, CNES/Airbus DS, USDA, USGS, AEX, Getmapping, Aerogrid, IGN, IGP, swisstopo, and the GIS User Community

0 325 650 1,300 Feet
1 inch = 1,300 feet




Copyright © 2016 FirstLight Power Resources All rights reserved.

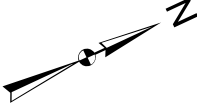


Northfield Mountain Pumped Storage Project (No. 2485) and
Turners Falls Hydroelectric Project (No. 1889)

Project Boundary
Map 5 of 9

Legend

 Project Boundary Polygon



Service Layer Credits: Sources: Esri, HERE, DeLorme, USGS, Intermap, INCREMENT P, NRCan, Esri Japan, METI, Esri China (Hong Kong), Esri Korea, Esri (Thailand), MapmyIndia, NGCC, © OpenStreetMap contributors, and the GIS User Community

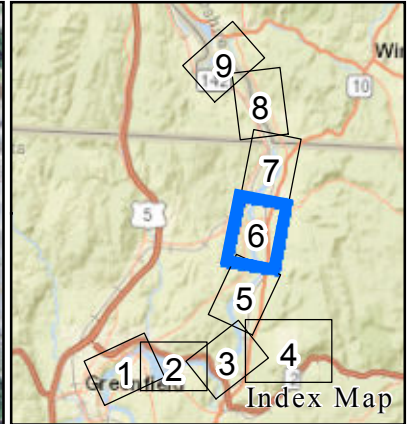
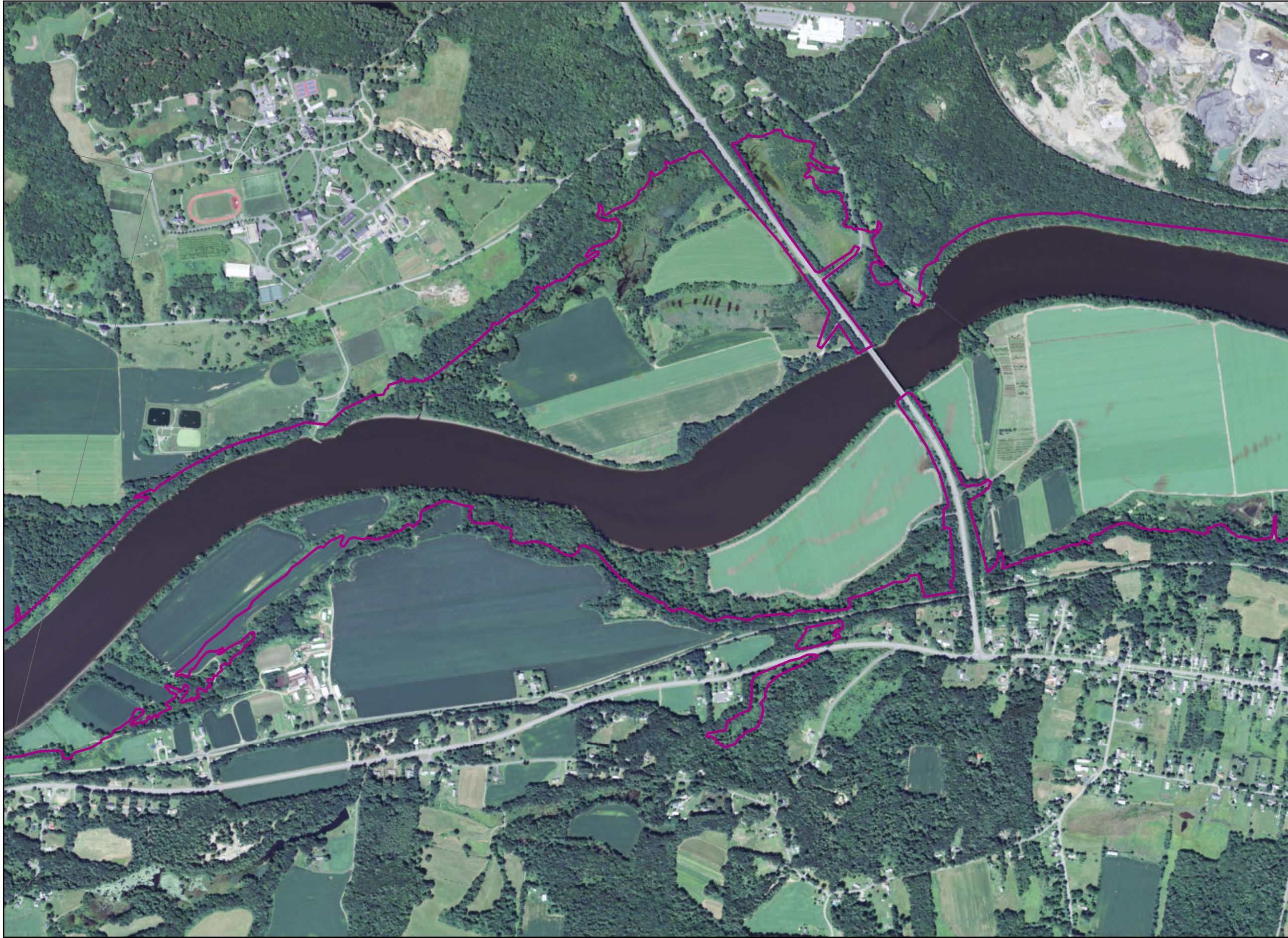
Source: Esri, DigitalGlobe, GeoEye, Earthstar Geographics, CNES/Airbus DS, USDA, USGS, AEX, Getmapping, Aerogrid, IGN, IGP, swisstopo, and the GIS User Community

0 250 500 1,000 Feet

1 inch = 1,000 feet



Copyright © 2016 FirstLight Power Resources All rights reserved.



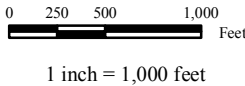
Northfield Mountain Pumped Storage Project (No. 2485) and
Turners Falls Hydroelectric Project (No. 1889)

Project Boundary
Map 6 of 9

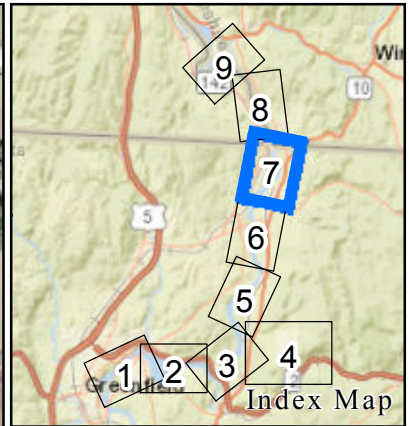
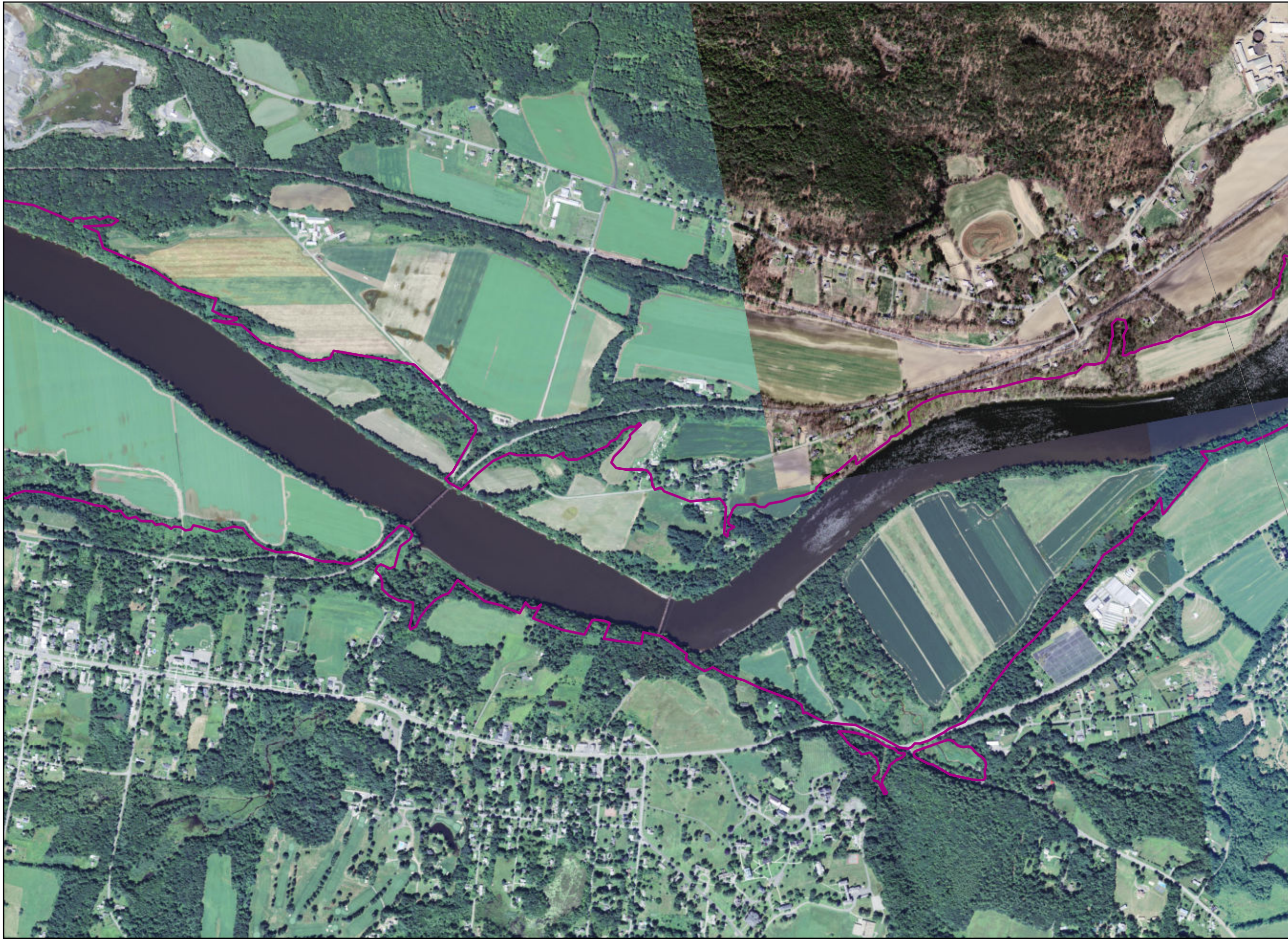
Legend
Project Boundary Polygon



Service Layer Credits: Sources: Esri, HERE, DeLorme, USGS, Intermap, INCREMENT P, NRCan, Esri Japan, METI, Esri China (Hong Kong), Esri Korea, Esri (Thailand), MapmyIndia, NGCC, © OpenStreetMap contributors, and the GIS User Community
Source: Esri, DigitalGlobe, GeoEye, Earthstar Geographics, CNES/Airbus DS, USDA, USGS, AEX, Getmapping, Aerogrid, IGN, IGP, swisstopo, and the GIS User Community




Copyright © 2016 FirstLight Power Resources All rights reserved.




Northfield Mountain Pumped Storage Project (No. 2485) and
Turners Falls Hydroelectric Project (No. 1889)

Project Boundary
Map 7 of 9

Legend

 Project Boundary Polygon

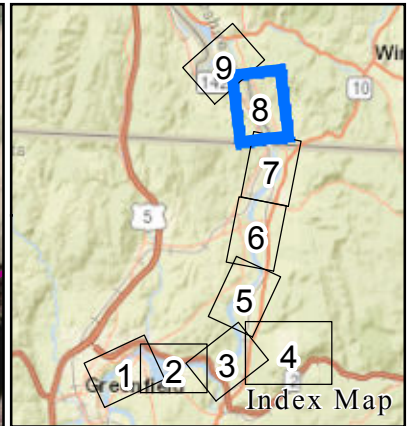
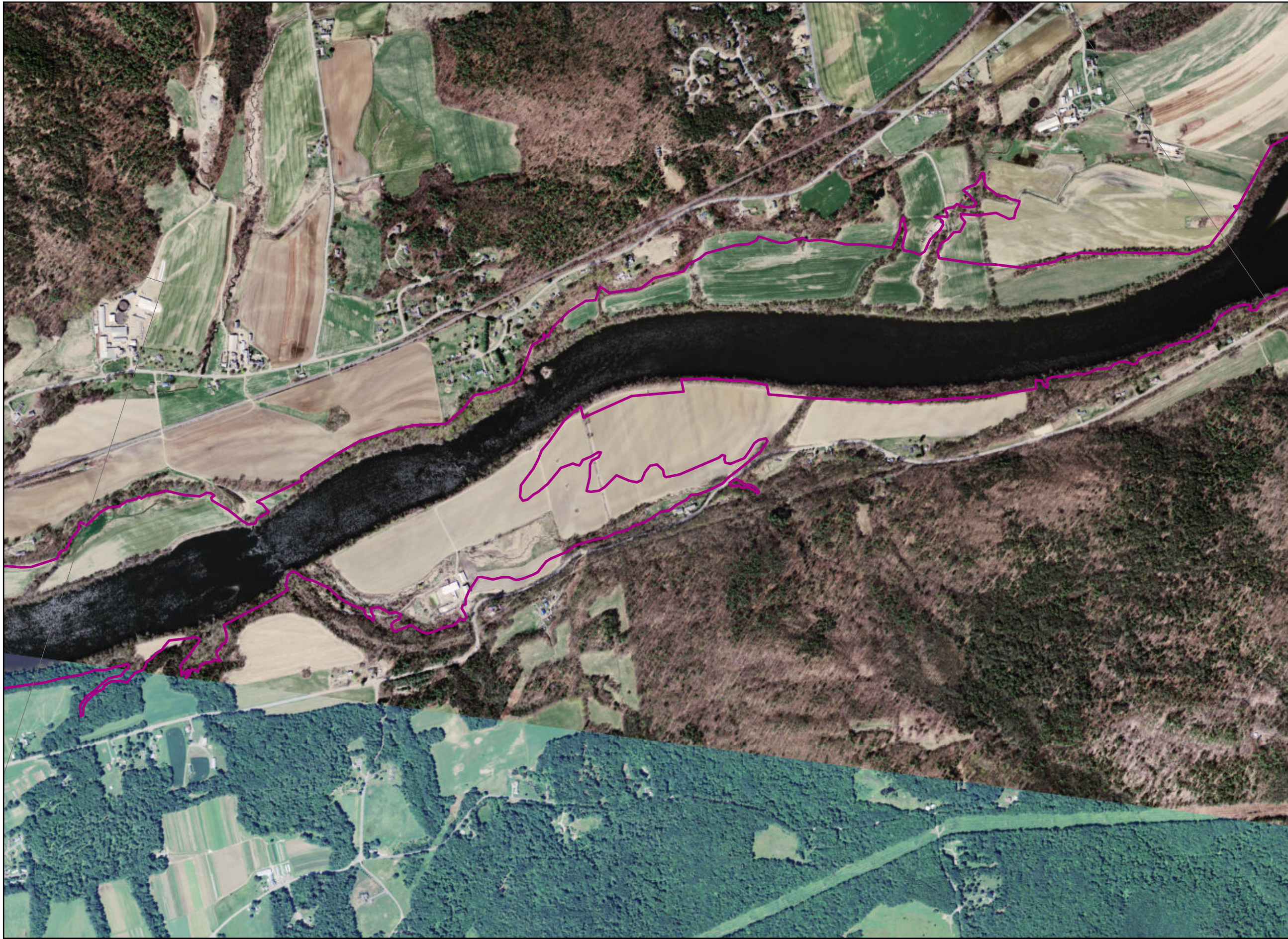


Service Layer Credits: Sources: Esri, HERE, DeLorme, USGS, Intermap, INCREMENT P, NRCan, Esri Japan, METI, Esri China (Hong Kong), Esri Korea, Esri (Thailand), MapmyIndia, NGCC, © OpenStreetMap contributors, and the GIS User Community
Source: Esri, DigitalGlobe, GeoEye, Earthstar Geographics, CNES/Airbus DS, USDA, USGS, AEX, Getmapping, Aerogrid, IGN, IGP, swisstopo, and the GIS User Community

0 250 500 1,000 Feet
1 inch = 1,000 feet




Copyright © 2016 FirstLight Power Resources All rights reserved.




Northfield Mountain Pumped Storage Project (No. 2485) and
Turners Falls Hydroelectric Project (No. 1889)

Project Boundary
Map 8 of 9

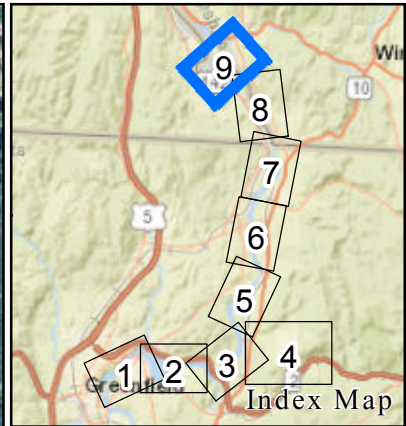
Legend

 Project Boundary Polygon



Service Layer Credits: Sources: Esri, HERE, DeLorme, USGS, Intermap, INCREMENT P, NRCan, Esri Japan, METI, Esri China (Hong Kong), Esri Korea, Esri (Thailand), MapmyIndia, NGCC, © OpenStreetMap contributors, and the GIS User Community
Source: Esri, DigitalGlobe, GeoEye, Earthstar Geographics, CNES/Airbus DS, USDA, USGS, AEX, Getmapping, Aerogrid, IGN, IGP, swisstopo, and the GIS User Community


0 250 500 1,000 Feet
1 inch = 1,000 feet

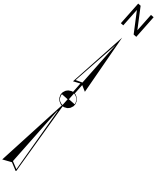


Northfield Mountain Pumped Storage
Project (No. 2485) and
Turners Falls Hydroelectric Project
(No. 1889)

Project Boundary
Map 9 of 9

Legend

 Project Boundary Polygon



Service Layer Credits: Sources: Esri, HERE, DeLorme, USGS, Intermap, INCREMENT P, NRCan, Esri Japan, METI, Esri China (Hong Kong), Esri Korea, Esri (Thailand), MapmyIndia, NGCC, © OpenStreetMap contributors, and the GIS User Community
Source: Esri, DigitalGlobe, GeoEye, Earthstar Geographics, CNES/Airbus DS, USDA, USGS, AEX, Getmapping, Aerogrid, IGN, IGP, swisstopo, and the GIS User Community

0 250 500 1,000 Feet
1 inch = 1,000 feet



Copyright © 2016 FirstLight Power Resources All rights reserved.