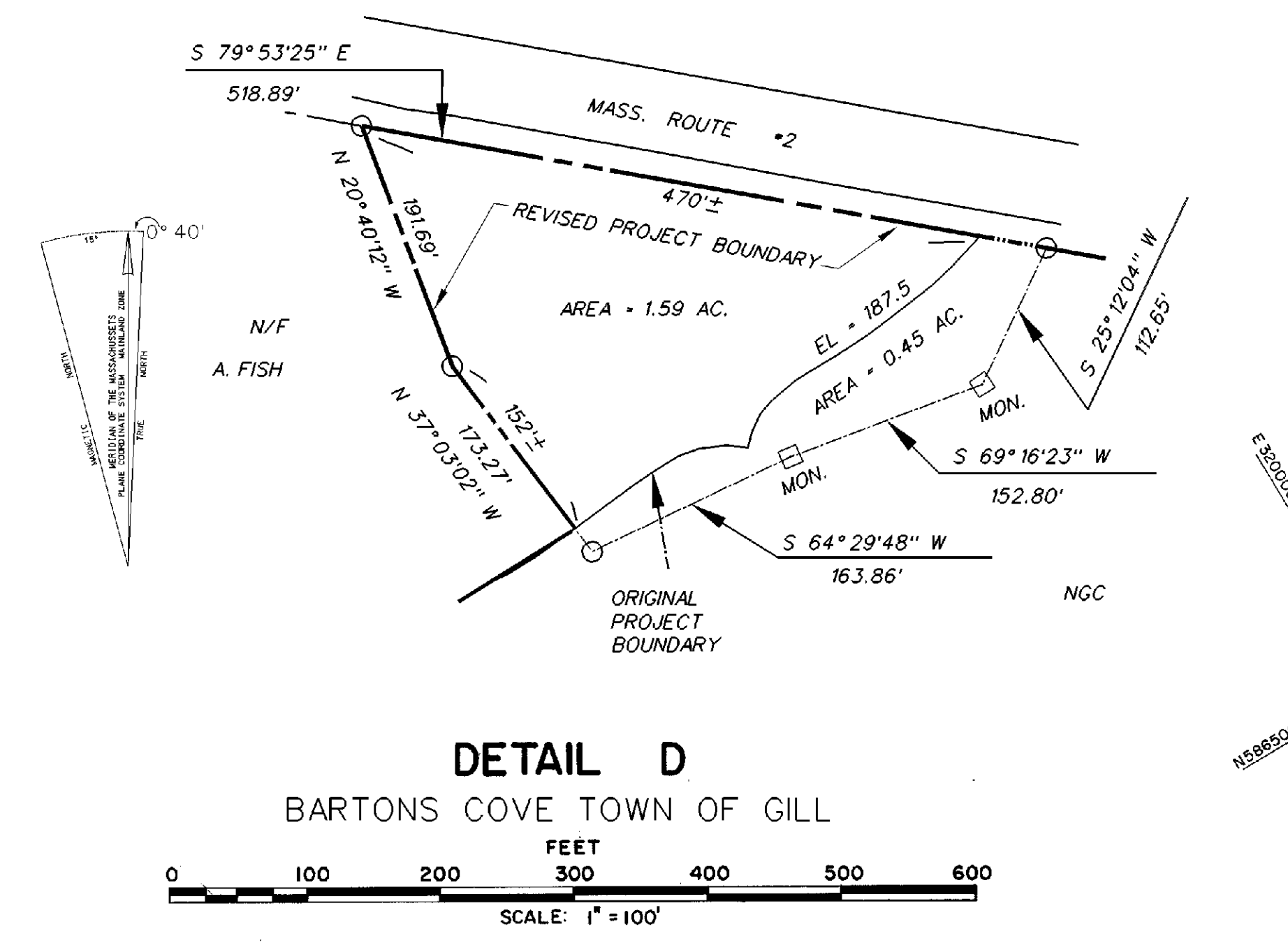
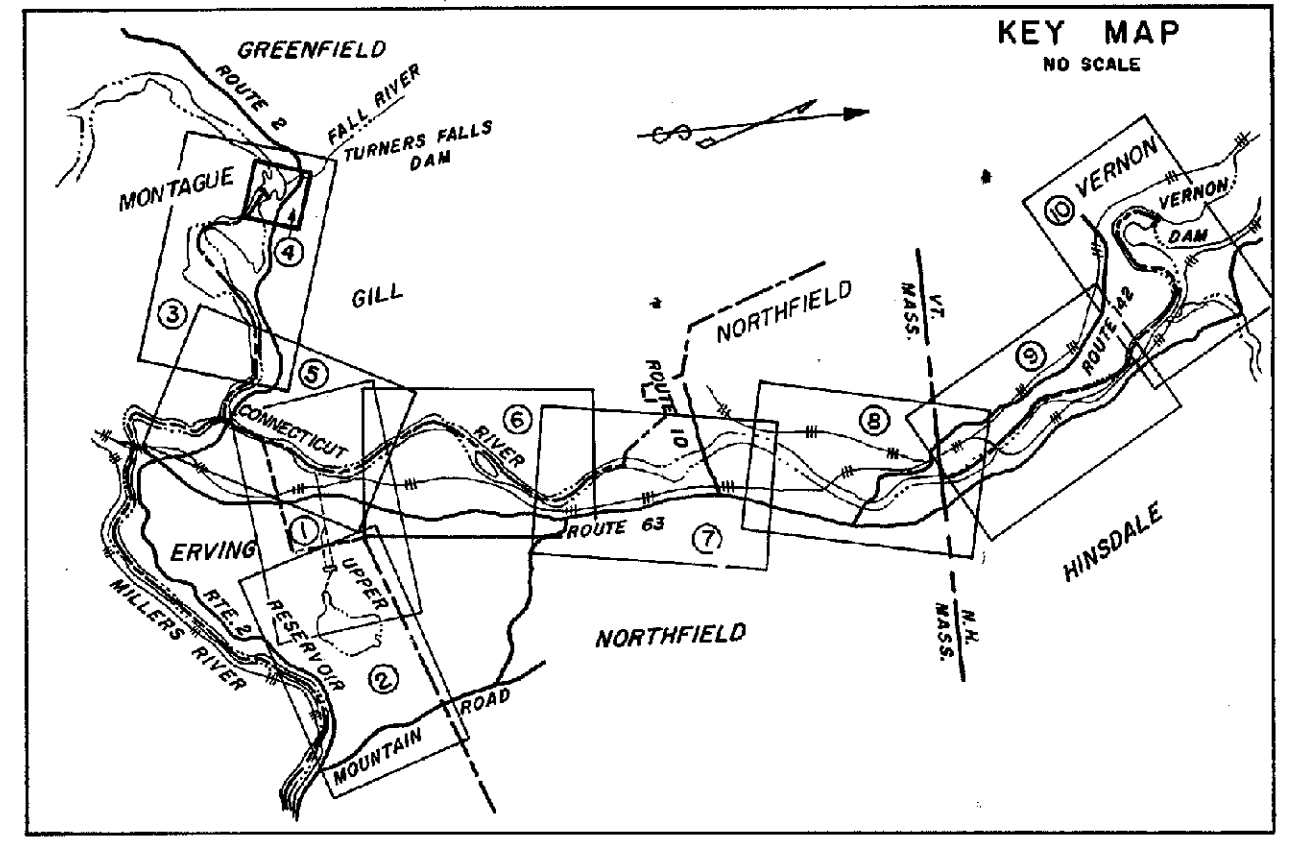


DETAIL A
RIVERSIDE VILLAGE TOWN OF GILL

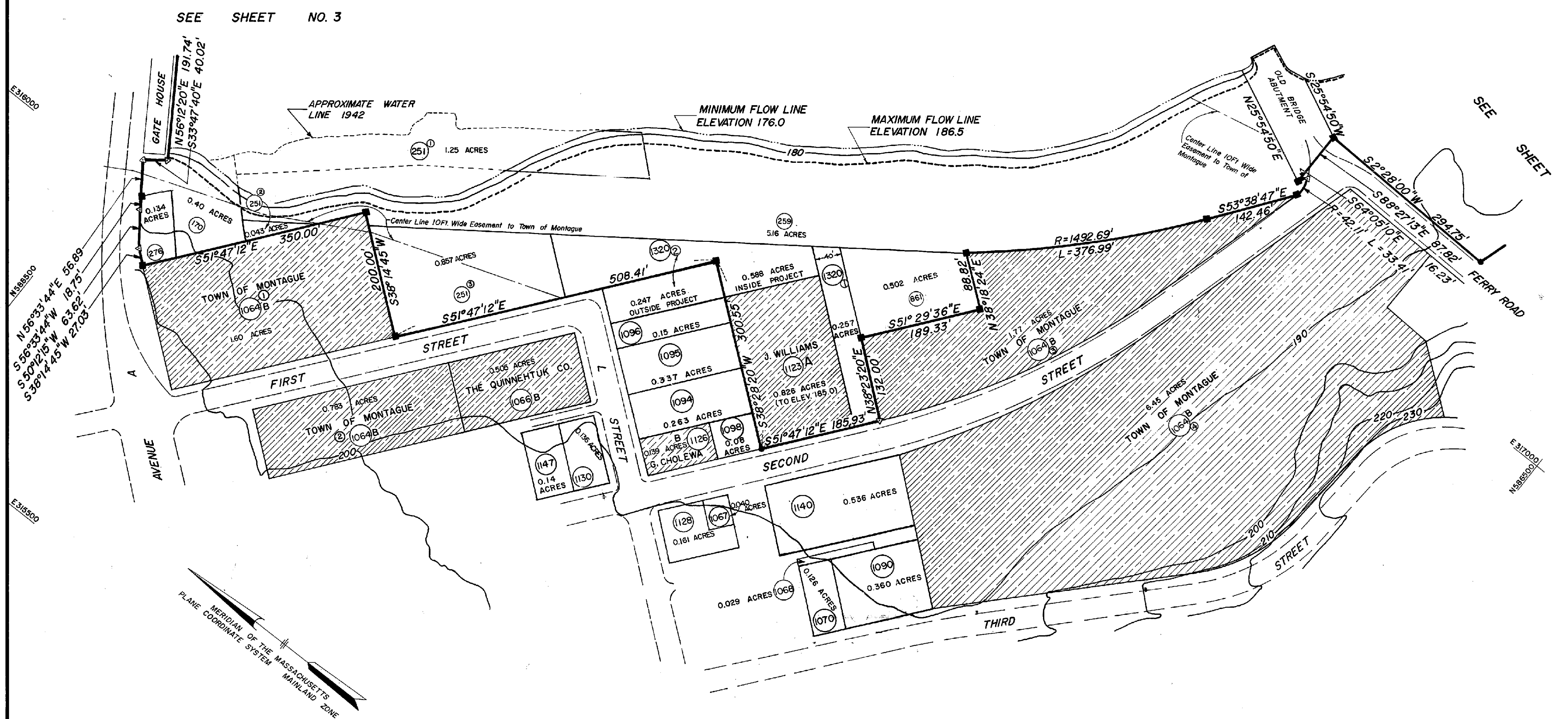
FEET
0 100 200 300 400 500 600
SCALE: 1" = 100'

FOR SYMBOL LEGEND SEE SHEET NO. 3



DETAIL D
BARTONS COVE TOWN OF GILL

FEET
0 100 200 300 400 500 600
SCALE: 1" = 100'



DETAIL B
TURNERS FALLS TOWN OF MONTAGUE

FEET
0 100 200 300 400 500 600
SCALE: 1" = 100'

FOR SYMBOL LEGEND SEE SHEET NO. 3

SHEETS #1, 3, 4, 5, 6, 7, 8 AND 10
RESUBMITTED IN COMPLIANCE WITH THE ORDER
DESIGNATED "INSTRUMENT NO. 9 AND AMENDMENT
NO. 1" BY THE UNDERSIGNED THIS 5th DAY OF JULY, 1978

THE CONNECTICUT LIGHT & POWER CO.
THE HARTFORD ELECTRIC LIGHT CO.
WESTERN MASSACHUSETTS ELECTRIC CO.

BY *W. J. Lee*
EXECUTIVE VICE-PRESIDENT

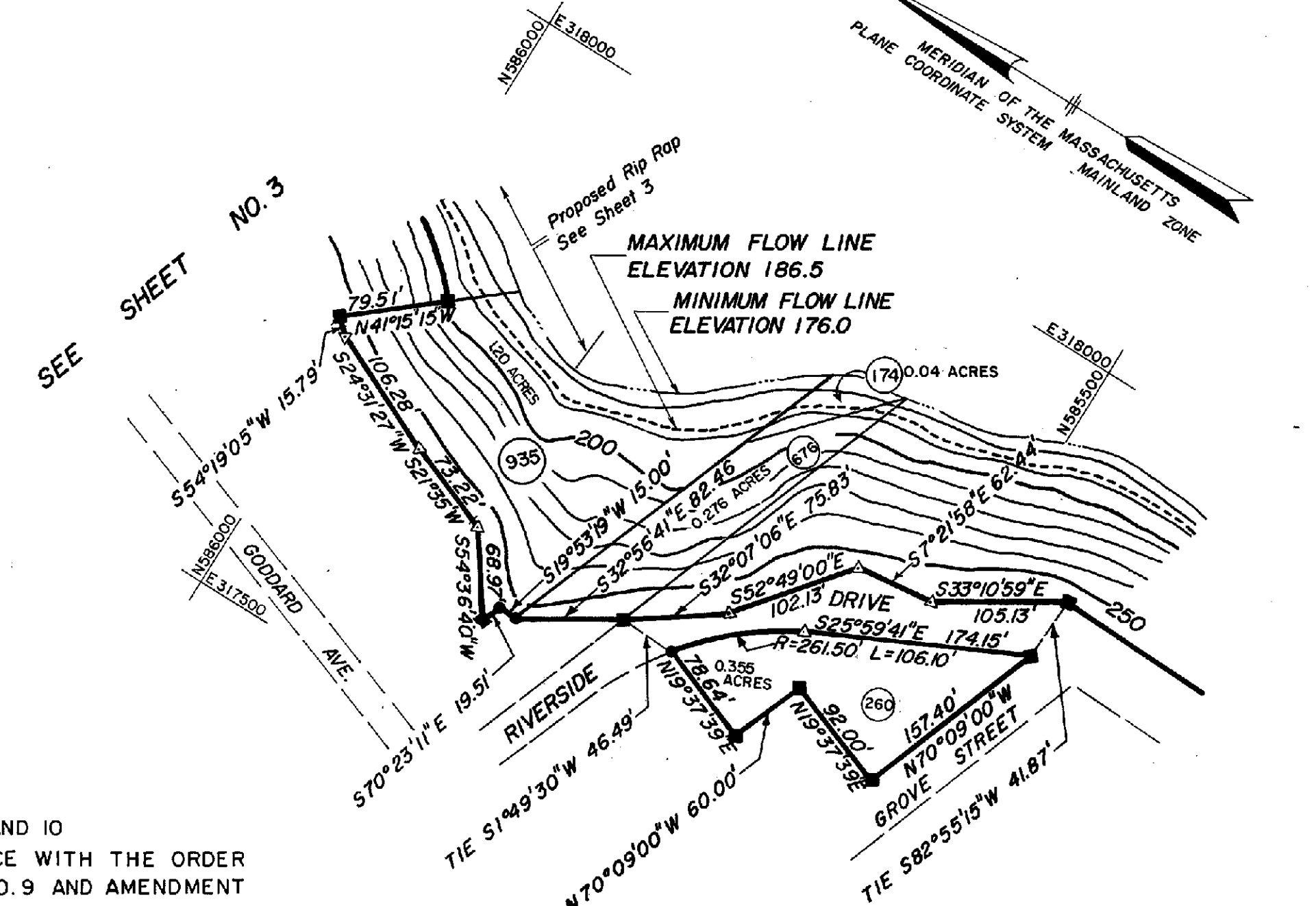
NOTE
SEE SHEET NO. 1 FOR CERTIFICATION BY LICENSEES.

THIS SURVEY HAS BEEN MADE FOR C.L. & P. CO.,
H.E.L. CO. AND W.M.E. CO. IN COMPLIANCE WITH THE
PRINCIPLES OF GOOD SURVEYING PRACTICE AND IS
CORRECTLY SHOWN HEREON.

GORDON E. AINSWORTH & ASSOC., INC.
BY *Gordon E. Ainsworth*
SURVEYOR



REV. 2, 10/4/78, RIGHTS ON PARCEL (107) CHANGED



DETAIL C
TURNERS FALLS TOWN OF MONTAGUE

FEET
0 100 200 300 400 500 600
SCALE: 1" = 100'

EXHIBIT K - SHEET NO. 4 OF 10 SHEETS
DETAIL MAP OF PROJECT
**NORTHFIELD MOUNTAIN
PUMPED STORAGE PROJECT**
F.P.C. PROJECT NO. 2485
THE CONNECTICUT LIGHT AND POWER CO.
THE HARTFORD ELECTRIC LIGHT CO.
WESTERN MASSACHUSETTS ELECTRIC CO.
NORTHEAST UTILITIES SERVICE COMPANY