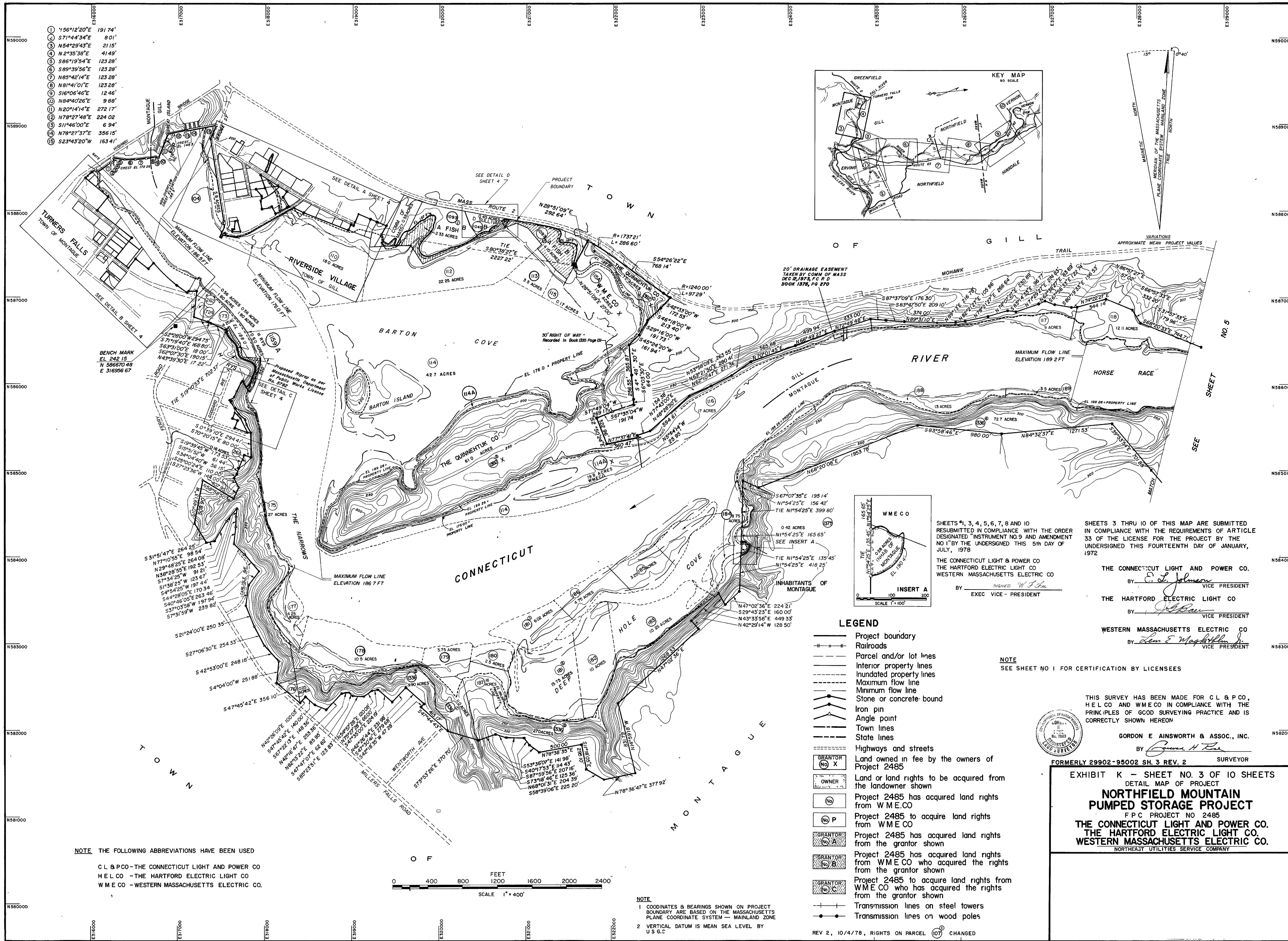
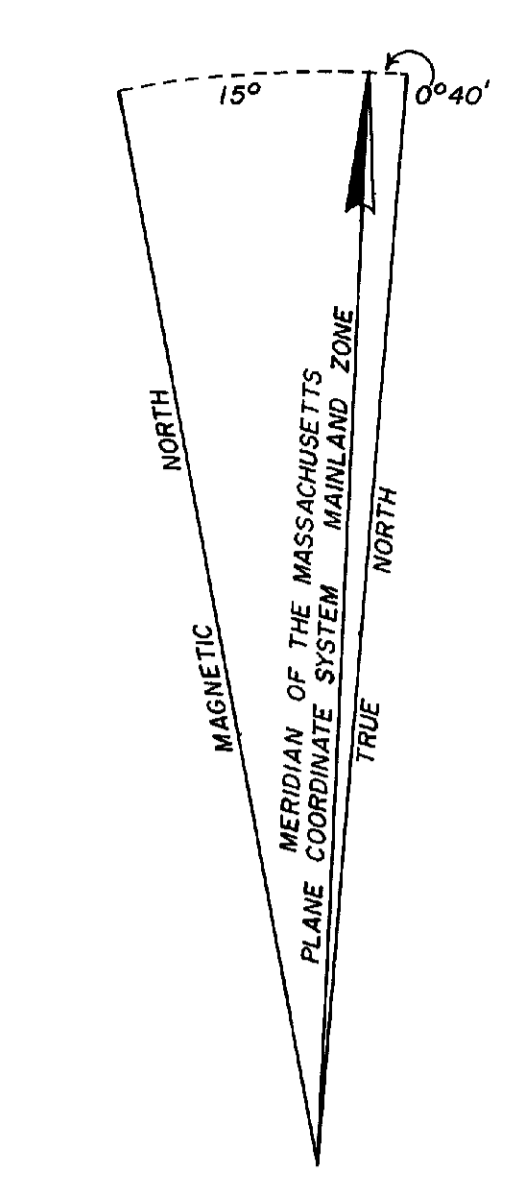
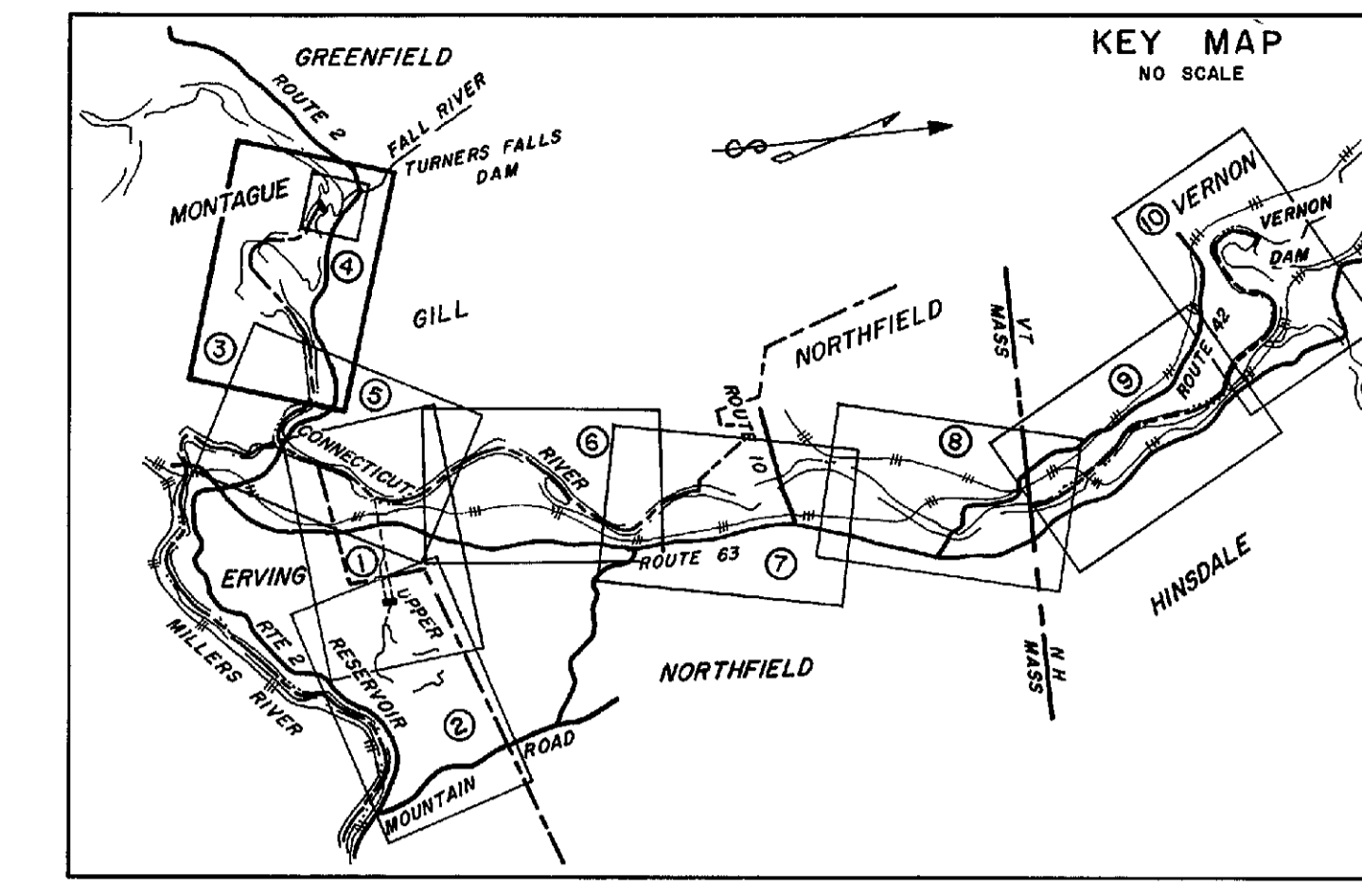
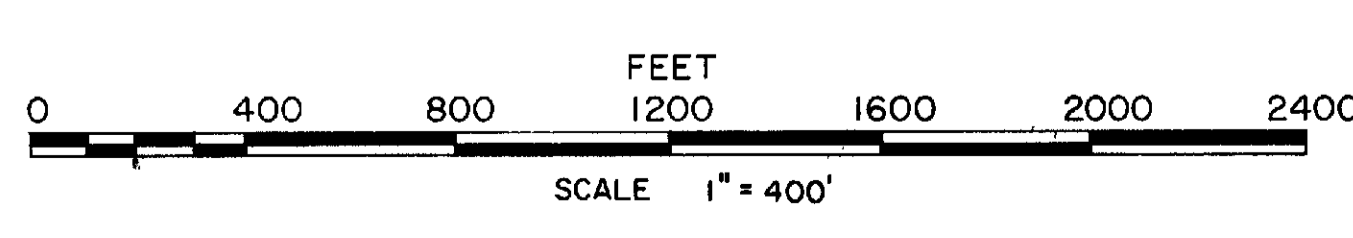


- ① 156°12'20"E 191.74'
- ② 371°44'34"E 80.1'
- ③ N54°29'43"E 21.15'
- ④ N2°35'38"E 41.49'
- ⑤ S86°19'54"E 123.28'
- ⑥ S89°39'56"E 123.28'
- ⑦ N85°42'14"E 123.28'
- ⑧ N81°41'01"E 123.28'
- ⑨ S16°06'46"E 12.46'
- ⑩ N84°40'26"E 9.88'
- ⑪ N20°14'14"E 272.17'
- ⑫ N78°27'48"E 224.02'
- ⑬ S11°46'00"E 6.94'
- ⑭ N78°27'37"E 356.15'
- ⑮ S23°43'20"W 163.41'

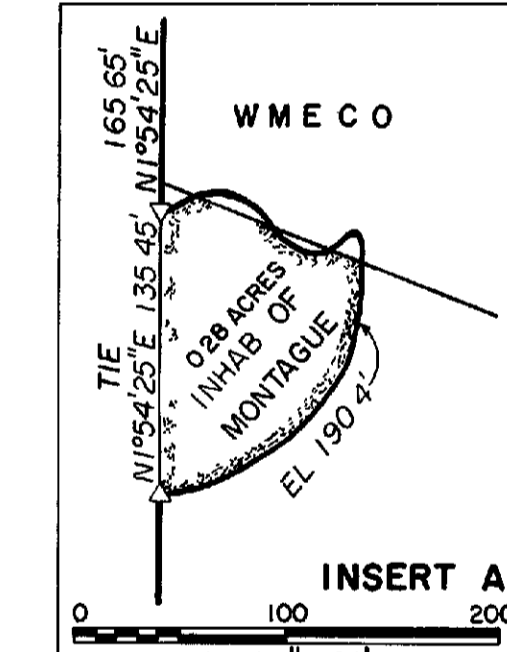


NOTE THE FOLLOWING ABBREVIATIONS HAVE BEEN USED
 C L & P CO - THE CONNECTICUT LIGHT AND POWER CO
 H E L CO - THE HARTFORD ELECTRIC LIGHT CO
 W M E CO - WESTERN MASSACHUSETTS ELECTRIC CO.



NOTE
 1 COORDINATES & BEARINGS SHOWN ON PROJECT BOUNDARY ARE BASED ON THE MASSACHUSETTS PLANE COORDINATE SYSTEM - MAINLAND ZONE
 2 VERTICAL DATUM IS MEAN SEA LEVEL BY U.S.G.C.

- LEGEND**
- Project boundary
 - Railroads
 - Parcel and/or lot lines
 - Interior property lines
 - Inundated property lines
 - Maximum flow line
 - Minimum flow line
 - Stone or concrete bound
 - Iron pin
 - Angle point
 - Town lines
 - State lines
 - Highways and streets
 - Land owned in fee by the owners of Project 2485
 - Land or land rights to be acquired from the landowner shown
 - Project 2485 has acquired land rights from W.M.E.CO
 - Project 2485 to acquire land rights from W.M.E.CO
 - Project 2485 has acquired land rights from the grantor shown
 - Project 2485 has acquired land rights from W.M.E.CO who acquired the rights from the grantor shown
 - Project 2485 to acquire land rights from W.M.E.CO who has acquired the rights from the grantor shown
 - Transmission lines on steel towers
 - Transmission lines on wood poles



THE CONNECTICUT LIGHT & POWER CO.
 THE HARTFORD ELECTRIC LIGHT CO
 WESTERN MASSACHUSETTS ELECTRIC CO
 BY *W.F. M.*
 EXEC VICE - PRESIDENT

SHEETS 1, 3, 4, 5, 6, 7, 8 AND 10
 RESUBMITTED IN COMPLIANCE WITH THE ORDER DESIGNATED "INSTRUMENT NO. 9 AND AMENDMENT NO. 1" BY THE UNDERSIGNED THIS 5TH DAY OF JULY, 1978

SHEETS 3 THRU 10 OF THIS MAP ARE SUBMITTED IN COMPLIANCE WITH THE REQUIREMENTS OF ARTICLE 33 OF THE LICENSE FOR THE PROJECT BY THE UNDERSIGNED THIS FOURTEENTH DAY OF JANUARY, 1972

THE CONNECTICUT LIGHT AND POWER CO.
 BY *E. L. Johnson*
 VICE PRESIDENT

THE HARTFORD ELECTRIC LIGHT CO
 BY *J. P. ...*
 VICE PRESIDENT

WESTERN MASSACHUSETTS ELECTRIC CO
 BY *Sam E. ...*
 VICE PRESIDENT

NOTE
 SEE SHEET NO 1 FOR CERTIFICATION BY LICENSEES

THIS SURVEY HAS BEEN MADE FOR C.L. & P.CO., H.E.L.CO AND W.M.E.CO IN COMPLIANCE WITH THE PRINCIPLES OF GOOD SURVEYING PRACTICE AND IS CORRECTLY SHOWN HEREON



GORDON E. AINSWORTH & ASSOC., INC.
 BY *Gordon H. ...*
 SURVEYOR

FORMERLY 29902-95002 SH. 3 REV. 2

EXHIBIT K - SHEET NO. 3 OF 10 SHEETS
 DETAIL MAP OF PROJECT
**NORTHFIELD MOUNTAIN
 PUMPED STORAGE PROJECT**
 FPC PROJECT NO 2485
 THE CONNECTICUT LIGHT AND POWER CO.
 THE HARTFORD ELECTRIC LIGHT CO.
 WESTERN MASSACHUSETTS ELECTRIC CO.
 NORTHEAST UTILITIES SERVICE COMPANY