

- LEGEND**
- Project boundary
  - Railroads
  - Parcel and/or lot lines
  - Interior property lines
  - Inundated property lines
  - Maximum flow line
  - Minimum flow line
  - Stone or concrete bound
  - Iron pin
  - Angle point
  - Town lines
  - State lines
  - Highways and streets

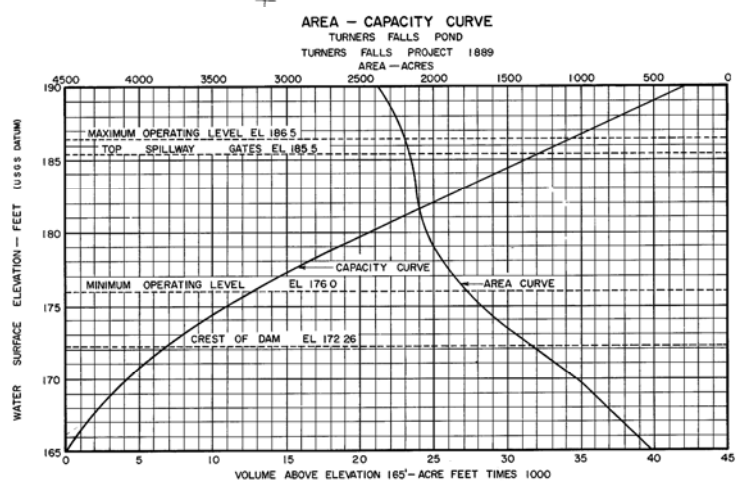
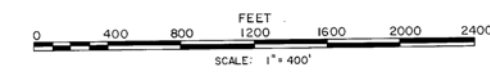
**NOTE**

1 COORDINATES & BEARINGS SHOWN ON PROJECT BOUNDARY ARE BASED ON THE MASSACHUSETTS PLANE COORDINATE SYSTEM - MAINLAND ZONE

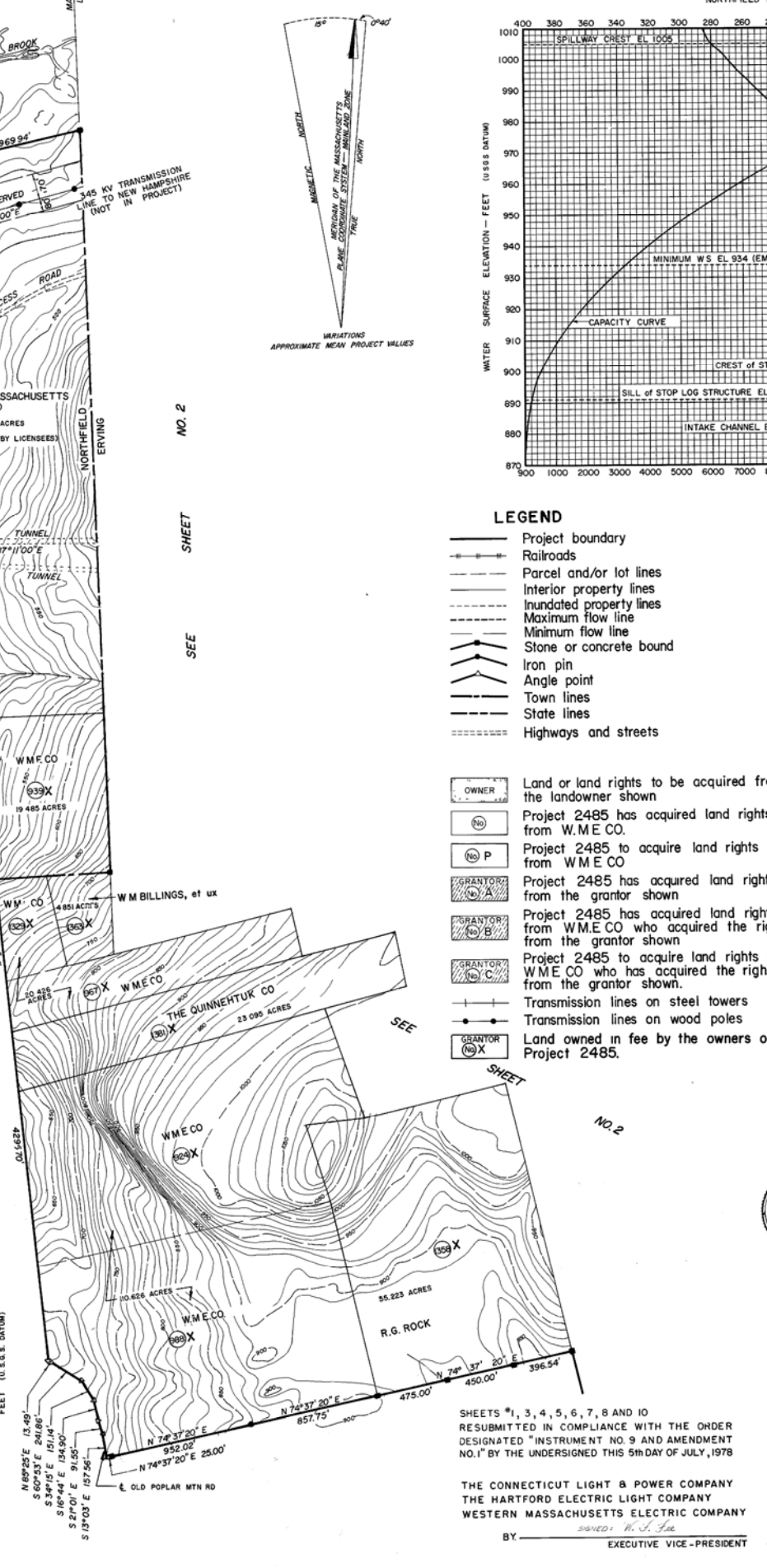
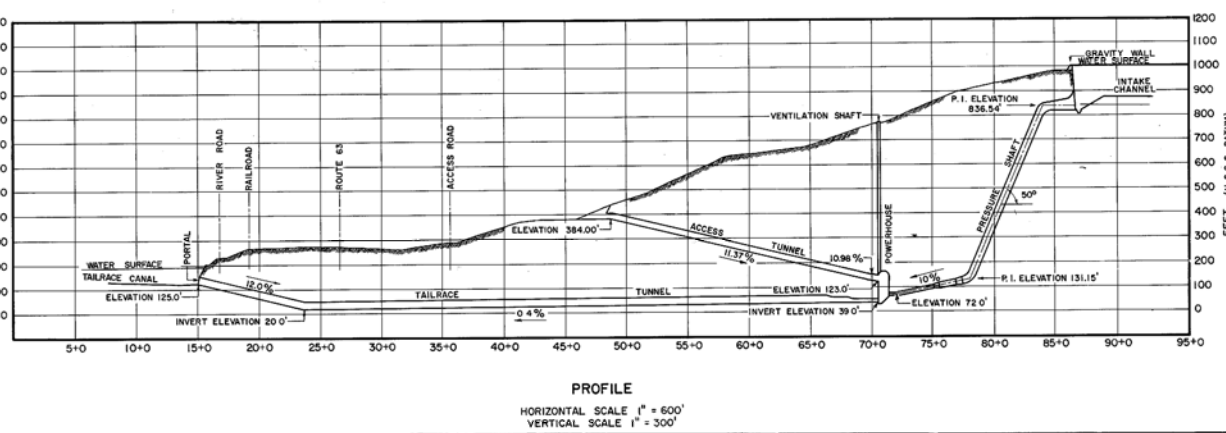
2 VERTICAL DATUM IS MEAN SEA LEVEL BY U.S.G.S.

**NOTE** THE FOLLOWING ABBREVIATIONS HAVE BEEN USED

C.L. & P.CO. - THE CONNECTICUT LIGHT AND POWER CO.  
 H.E.L.CO. - THE HARTFORD ELECTRIC LIGHT CO.  
 W.M.E.CO. - WESTERN MASSACHUSETTS ELECTRIC CO.



① N 83°47'00"E 79.89'	⑩ N 87°04'08"W 226.97'
② R = 830.00' L = 212.55'	⑪ N 66°03'00"W 70.00'
③ N 64°01'50"E 303.96'	⑫ N 4°39'35"W 260.22'
④ R = 770.00' L = 406.42'	⑬ N 5°29'16"E 188.05'
⑤ N 88°04'00"E 72.53'	⑭ S 83°23'20"W 73.66'
⑥ R = 830.00' L = 480.48'	⑮ N 40°10'03"E 93.20'
⑦ S 64°01'50"W 303.96'	⑯ N 45°26'21"E 0.47'
⑧ R = 770.00' L = 100.55'	⑰ N 7°17'06"E 412.78'
⑨ N 83°47'00"E 96.28'	⑱ N 5°31'41"W 194.77'
⑩ N 4°48'08"E 71.54'	⑲ N 17°06'32"W 53.65'
⑪ S 88°04'38"W 57.79'	⑳ N 8°00'00"E 850.00'
⑫ N 84°25'59"W 49.06'	㉑ N 87°00'00"E 330.00'
⑬ N 86°13'50"W 170.47'	㉒ S 82°00'00"E 530.00'
⑭ N 29°51'47"W 6.04'	㉓ N 2°34'01"E 46.03'
⑮ N 87°04'08"W 408.94'	㉔ N 88°04'38"E 60.39'
⑯ N 0°06'40"W 49.57'	㉕ N 88°04'38"E 62.54'



- OWNER** Land or land rights to be acquired from the landowner shown
- ⑩ Project 2485 has acquired land rights from W.M.E.CO.
- ⑪ Project 2485 to acquire land rights from W.M.E.CO.
- ⑫ Project 2485 has acquired land rights from the grantor shown
- ⑬ Project 2485 has acquired land rights from W.M.E.CO. who acquired the rights from the grantor shown
- ⑭ Project 2485 to acquire land rights from W.M.E.CO. who has acquired the rights from the grantor shown.
- ⑮ Transmission lines on steel towers
- ⑯ Transmission lines on wood poles
- ⑰ Land owned in fee by the owners of Project 2485.



THIS SURVEY HAS BEEN MADE FOR C.L. & P.CO., H.E.L.CO. AND W.M.E.CO. IN COMPLIANCE WITH THE PRINCIPLES OF GOOD SURVEYING PRACTICE AND IS CORRECTLY SHOWN HEREON.

GORDON E. AINSWORTH & ASSOC., INC.  
 BY *Gordon E. Ainsworth* SURVEYOR  
 FORMERLY 29902-95002 SH. 1 REV. 1

EXHIBIT K - SHEET NO. 1 OF 10 SHEETS  
 DETAIL MAP OF PROJECT  
**NORTHFIELD MOUNTAIN PUMPED STORAGE PROJECT**  
 F.P.C. PROJECT NO. 2485  
 THE CONNECTICUT LIGHT AND POWER CO.  
 THE HARTFORD ELECTRIC LIGHT CO.  
 WESTERN MASSACHUSETTS ELECTRIC CO.  
 NORTHEAST UTILITIES SERVICE COMPANY

SHEETS #1, 3, 4, 5, 6, 7, 8 AND 10 RESUBMITTED IN COMPLIANCE WITH THE ORDER DESIGNATED "INSTRUMENT NO. 9 AND AMENDMENT NO. 1" BY THE UNDERSIGNED THIS 5th DAY OF JULY, 1978

THE CONNECTICUT LIGHT & POWER COMPANY  
 THE HARTFORD ELECTRIC LIGHT COMPANY  
 WESTERN MASSACHUSETTS ELECTRIC COMPANY  
 BY *W. J. F. ...* EXECUTIVE VICE-PRESIDENT