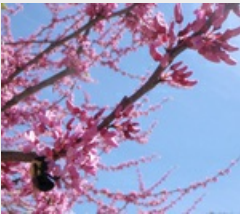




In This Issue

- [Spring Programs at Northfield](#)
- [Early Childhood Educator Workshops](#)



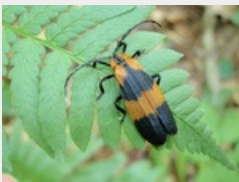
Join us this spring to:

Explore the amazing world of a [pond](#).

Join fellow educators at an ["Environmental Experiences for Young Children" Workshop](#).

Discover the [rebirth of life](#) in the forests and fields at Northfield.

Witness the [migration of American shad, sea lamprey](#) and other unique anadromous fish.



Explore the life of insects.

What's New at the Mountain

Three upcoming Professional Development Events for Educators this spring. Please join us! [Click here](#) for more details.

Call to Schedule a School Program for this Spring

To make a reservation call (413) 659-4426 or (800) 859- 2960.

All environmental school programs support the Massachusetts Science Frameworks. If we are not able to answer the phone please leave a detailed message regarding the program of interest, class size, grade and how we can best reach you. We look forward to seeing your students here this spring.

"As always the program beautifully fit the standards and developmental stages of the learners."
1st grade teacher, Hatfield Elementary

Environmental Education Programs

WHERE THE SIDEWALK ENDS

This program is designed specifically for the open and curious minds of young children. Using the outdoors as the classroom, young children discover the colors, shapes, textures, sounds and smells of this season of rebirth. Hands-on activities and sensory exploration take place in a safe and playful environment. Join us in exploring the fields and forests during this exciting season of change.

- Grades Pre-K and Kindergarten
- Time Allowance: 1 hour for Pre-K, 1¼ hours for K
- Group Size: 22
- Availability: Thursday and Friday Late April, May and June
- Fee: \$5/student; minimum \$50/class
- Science and Technology Standards Applicable:
Earth Science (PreK - K) # 1, Life Science (PreK - K) # 1, # 6, # 7, # 8

INCREDIBLE INSECTS

Join us and explore the six and eight-legged wonders that abound in our fields. Students will have the opportunity to collect, observe, draw and release insects and spiders. A variety of activities will introduce the amazing adaptations, life cycles and ecology of one of the most successful groups of animals on earth - incredible insects.

- Grades 1, 2 and 3
- Time Allowance: 2 hours
- Group Size: 25 (10/1 student/adult chaperon ratio)
- Availability: Thursday and Friday May 17 - June 15
- Fee: \$6/student; minimum \$60/class
- Science and Technology Standards Applicable:
Earth Science (Grades 1 - 2) # 1,
Life Science (Grades 1 - 2) # 1, # 3, # 6, # 8, (Grades 3 - 5) # 3, # 4, # 7

SIGNS OF SPRING

Soon to come alive and awaken with signs of spring, the forests and fields at Northfield provide an exciting outdoor classroom for students to discover the world around them. A variety of hands-on activities are used to explore signs of spring with a focus on birds and wildflowers. The emphasis for 1st and 2nd grade is sensory exploration and discovery. For grade 3 and above, the emphasis is on ecology and adaptation.

- Grades 1-6
- Time Allowance: 1½-2 hours depending on grade
- Group Size: 25 (10/1 student/adult chaperon ratio)



See the different stages of the life of a frog.

- Group Size: 25 (10/1 student/adult chaperon ratio)
- Availability: Thursday and Friday Late April, May and June
- Fee: \$6/student; minimum \$60/class
- Science and Technology Standards Applicable:
Earth Science (Grades 1 - 2) # 1,
Life Science (Grades 1 - 2) # 1, # 3, # 6, # 7, # 8, (Grades 3 - 5) # 2, # 3

POND PROBE

This popular program is available during the spring and summer. Explore the amazing world of a pond in spring. From aquatic insects to salamanders, this program provides a unique opportunity to observe live animals up close. Students examine the underwater world of a small pond using collecting nets, field guides and magnifiers. Environmental ethics, pond ecology, observation skills, and adaptations of the unique inhabitants of a pond are the focus of this program. Pre- and post-visit curriculum materials available.

- Grades 1 and above
- Time Allowance: 1¾-2 hours depending on grade
- Group Size: 30 (groups up to 40 on limited days) (10/1 student/adult chaperon ratio)
- Availability: Wednesday, Thursday and Friday Late April, May, June, July, August
- Fee: \$6/student; minimum \$90/class
- Science and Technology Standards Applicable:
Earth Science (Grades 1 - 2) # 1, (Grades 3 - 5) # 10
Life Science (Grades 1 - 2) # 1, # 3, # 6, # 8, (Grades 3 - 5) # 3, # 4

Visit the Turners Falls Fishway

FINS AND LADDERS

Visit the Turners Falls Fishway for a watchable wildlife experience. This program focuses on migratory fish of the Connecticut River and the fish ladders that these fish use to bypass the dam. A variety of activities will introduce anadromous fish and the challenges of their upstream journey. These fascinating fish are born in the river or its tributaries, migrate to the ocean and return as adults to spawn in freshwater. American shad and sea lamprey can often be seen swimming by the viewing windows. Hands-on activities and an opportunity for possible wildlife viewing make this an exciting program for all ages. Pre- and post-visit curriculum materials available.

- All Grades
- Time Allowance: 1 hour - 1 & ¼ hours
- Group Size: 30 (15/1 student/adult ratio)
- Availability: Wednesday, Thursday and Friday Programs at 9:30, 10:45 or 1:00
- May 17 - June 15
- Free
- Science and Technology Standards Applicable:
Earth Science (PreK - 2) # 1, Life Science (PreK - 2) # 1, # 3, # 6, # 8, (Grades 3 - 5) # 3

ORIENTEERING

Opportunities are available for teachers to *lead their own orienteering program* using the permanent course at Northfield Mountain after teaching the necessary skills in their classroom. Guidelines for teachers interested in leading their own orienteering program using Northfield Mountain's permanent orienteering course: Use of Northfield's orienteering course is available to school groups Wed. - Fri. 9:00am - 4:30pm beginning April 11. A teacher or a group leader must reserve their use of the orienteering course in advance. Northfield Mountain staff will not be available to instruct your students. However, we will assist you in planning logistics for your group's use of the orienteering course.

- Availability: Wednesday, Thursday and Friday April 11 - October
- Students must be accompanied by an adult chaperon while using Northfield Mountain's orienteering course. Organizing your students into groups (3 to 5 students working together) creates a small group activity which is effective for learning orienteering.
- Orienteering maps are available for \$2.00 per map. Compasses may be rented for \$1.00 per compass while your group is at Northfield Mountain.
- Indoor classroom space is not available so please plan instructional units accordingly.
- We will continue to offer support for teachers interested in leading their own orienteering program. An instructional activity packet designed to help you teach map reading and orienteering skills at your school is available for \$6.00 (plus \$3.85 postage & handling).

Professional Development Workshops and Events

To Register: Please email Kim Noyes at kim.noyes@gdfsuezna.com with your name, school, grade and/or subject, a home and cell number in case of inclement weather and mail a check for \$20 payable to Northfield Mountain to: Kim Noyes, Northfield Mountain Recreation and Environmental



Watch migratory fish through the Viewing Window at the Fishway.



Exploring the natural world.

Northfield Mountain is owned by:



99 Millers Falls Road, Northfield, MA 01360. For more information please call Kim at (413) 659-4462.

Please visit our website for more information about Northfield Mountain:

<http://www.firstlightpower.com/northfield/>

Mother Nature's Child

Thurs., March 29; 7:00 – 9:00 p.m.

Location: U.S. Fish and Wildlife Regional Office in Hadley, MA

Adults interested in children's development, education and health

No pre-registration required. Free

The Valley Environmental Education Collaboration (VEEC) will be showing the new film, "Mother Nature's Child: Growing Up in the Media Age." "Mother Nature's Child" explores nature's powerful role in children's health and development through the experiences of toddlers, children in middle childhood and adolescents. The film marks a moment in time when a living generation can still recall childhoods of free play outdoors; this will not be true for most children today. The effects of "nature deficit disorder" are now being noted across the country in epidemics of child obesity, attention disorders and depression.

Mother Nature's Child asks the questions: Why do children need unstructured time outside? What is the place of risk-taking in healthy child development? How is play a form of learning? What does it mean to educate the 'whole' child?

After the film we will have the opportunity to go deeper into the themes of the movie in small group discussions led by local leaders in outdoor education and childhood development; **Liz Austin Ed.D.**, psychologist specializing in parent education, **Colleen Kelley**, educator for 28 years at the Hitchcock Center, **Ginny Sullivan**, author of *Lens on Outdoor Learning*, **Aaron Kropf**, Physics Teacher and leader of the Outdoor Survival Program at Amherst Regional High School and **Ruthie Ireland**, teacher at Arcadia Nature Pre-school.

Director Camilla Rockwell began her work in film with filmmaker Ken Burns, working on nine of his PBS programs and series. In 1999, she established Fuzzy Slippers Productions to produce films on creativity and the arts, healing and well-being.

This event is made possible by a grant from Northeast Utilities.

Project Learning Tree: Environmental Experiences for Early Childhood

Sat., April 28; 9:30 a.m. – 12:30 p.m.

For educators of children ages 3 – 6

Fee: \$20, includes Activity Guide and CD

Pre-register by calling 800-859-2960 or email kim.noyes@gdfsuezna.com

This new early childhood education curriculum builds on children's sense of wonder about nature. The activity guide, written for educators of children ages 3-6, includes over 130 experiences that engage children in outdoor play and exploration. Educators will participate in a variety of interactive, hands-on, fun-filled activities and gain experience and skills helpful for taking children outside to explore the natural world. This professional development workshop is great for teachers, camp counselors, child care providers, home school parents and other educators of young children. Taught by Tim Rayworth, Regional Environmental Education Coordinator for the Massachusetts Department of Conservation and Recreation and Northfield Mountain's Kim Noyes, this workshop will take place both inside and outside. PLT is correlated to the National Association for the Education of Young Children (NAEYC) Standards and the Head Start Child Outcomes Framework.

No Child Left Indoors: Professional Development for Early Childhood Educators

Thursday, May 31; 6 p.m. – 8 p.m.

For Educators of children ages 3 – 7

Fee: \$10

Pre-register by calling 800-859-2960 or email kim.noyes@gdfsuezna.com

Join Kim Noyes and Jim Lafley for an educational and entertaining evening with fellow educators. With over 50 years of combined outdoor teaching experience, Jim and Kim have a wealth of activities to share and inspire you to take children outdoors. Build on children's innate curiosity in the natural world with fun and engaging activities using free or inexpensive materials. This program will be filled with activities to enhance children's observation, problem-solving, math, reading, language and science skills. The evening will be spent both indoors, modeling activities to bring the outdoors in, and outdoors, because no child should be left inside. This professional development workshop is great for teachers, camp counselors, child care providers, home school parents and other educators. Dress for the outdoors. Light refreshments provided.

[Forward this message to a friend](#) | (800) 859-2960

If you no longer wish to receive these emails, please reply to this message with "Unsubscribe" in the subject line or simply click on the following link: [Unsubscribe](#)

99 Millers Falls Road
Northfield, Massachusetts 01360
US

[Read](#) the VerticalResponse marketing policy.

